

# Old Photo Album

By Doug DeCroix

**W**ith temperatures in the 50s and 60s throughout most of December, and little measurable snowfall, the winter of 2015-16 certainly had an unusual start for Western New York. But the new year has brought with it temperatures more in line with the season, and of course a good deal of the “white stuff,” depending on one’s proximity to the still-open lakes.

Though the weather certainly seems to be catching up with the season, these images from Western New York winters past provided an interesting contrast to the views of green grass and rain out our office doors when we were compiling them for this issue.

From transportation to winter sports to frozen rivers and waterfalls, these views from around the region clearly demonstrate that little has changed over the years. Whatever Mother Nature may have in store, Western New Yorkers find a way to get around, do business – and even have some fun – during these cold months of the year. We hope you will enjoy this brisk and chilly trip down memory lane!

## *Snowy Streets and Rails*



A snowy look up Genesee Street, near the intersection of Main Street, ca. 1924. Note the dome of the Buffalo Savings Bank looming in the wintry gloom.

WESTERN NEW YORK  
HERITAGE PRESS COLLECTION



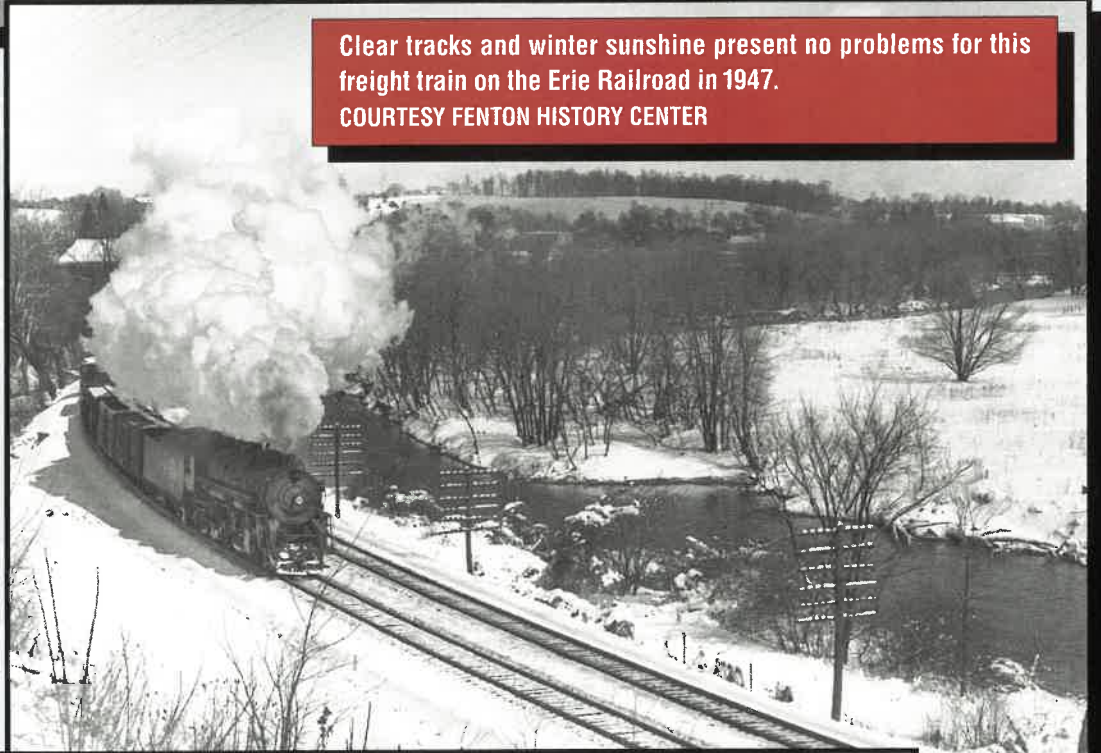
Foote Avenue in Jamestown provided this similar view of snow-covered cars and frosty storefronts, ca. 1931. COURTESY FENTON HISTORY CENTER



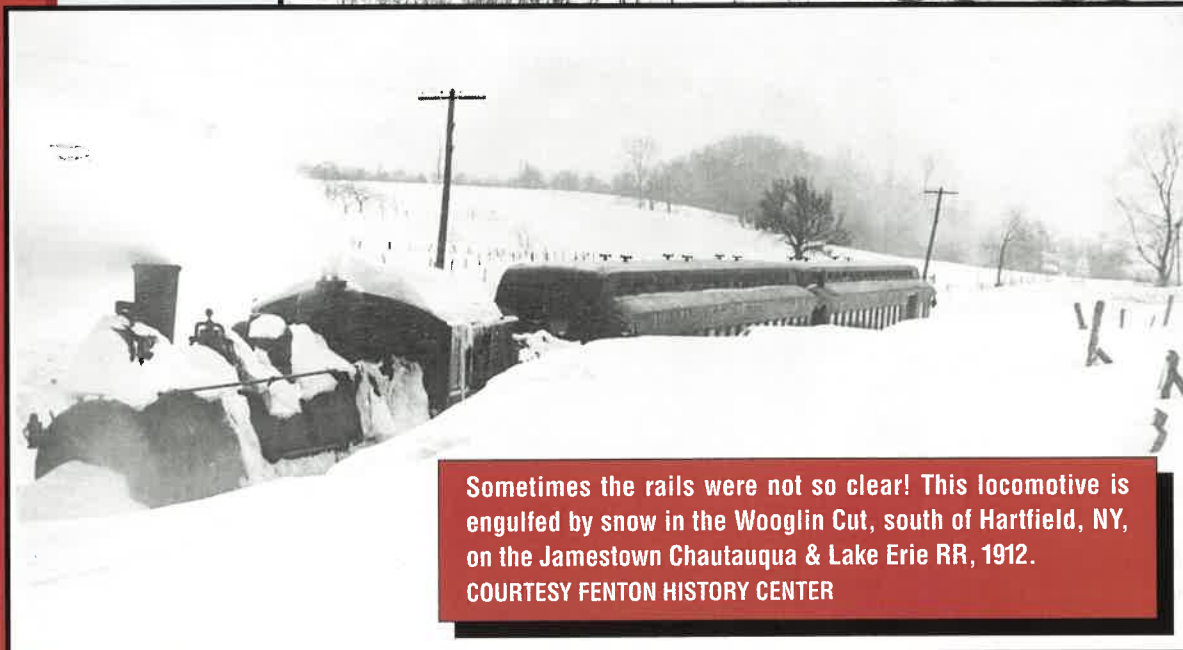
Getting around town in a Western New York winter can be a challenge, whether driving or using public transportation, as this St. Patrick's Day view of the intersection at West Third and Washington streets in Jamestown demonstrates. Check out the icicles on the rail car windows in this 1936 photo! COURTESY FENTON HISTORY CENTER



A driver cautiously negotiates a "snow cut" along a Chautauqua County road during the winter of 1958.  
COURTESY FENTON HISTORY CENTER

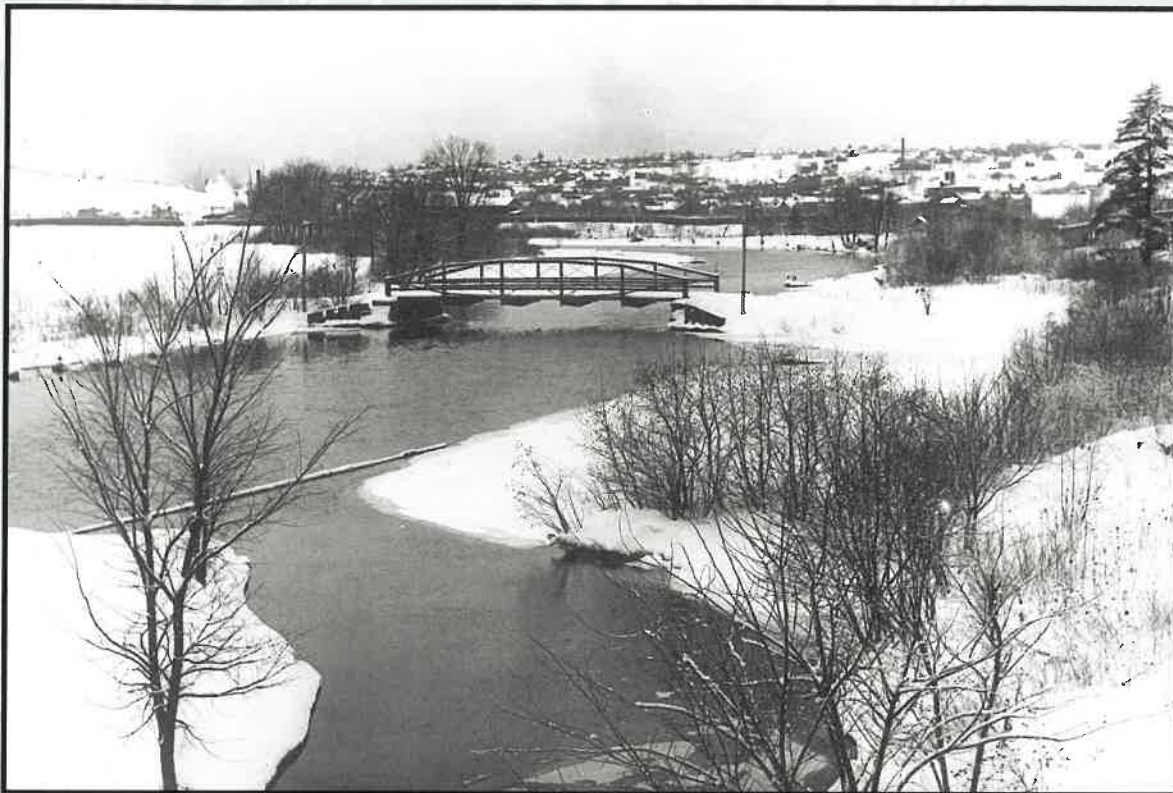


Clear tracks and winter sunshine present no problems for this freight train on the Erie Railroad in 1947.  
COURTESY FENTON HISTORY CENTER

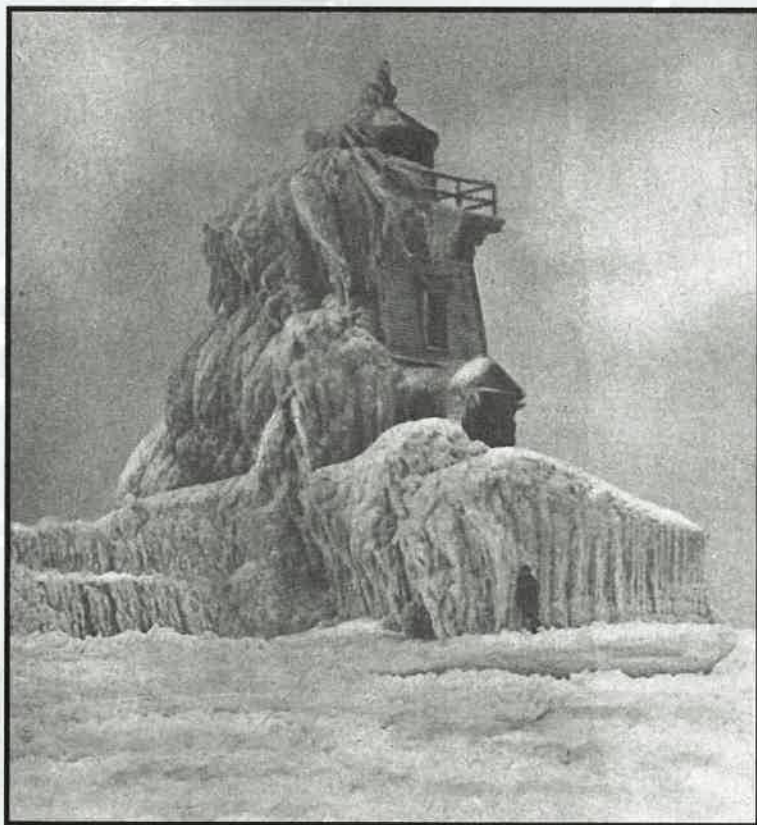


Sometimes the rails were not so clear! This locomotive is engulfed by snow in the Wooglin Cut, south of Hartfield, NY, on the Jamestown Chautauqua & Lake Erie RR, 1912.  
COURTESY FENTON HISTORY CENTER

## Frozen Vistas



The Chadakoin River meanders through the east side of Jamestown in this bucolic winter scene.  
COURTESY FENTON HISTORY CENTER



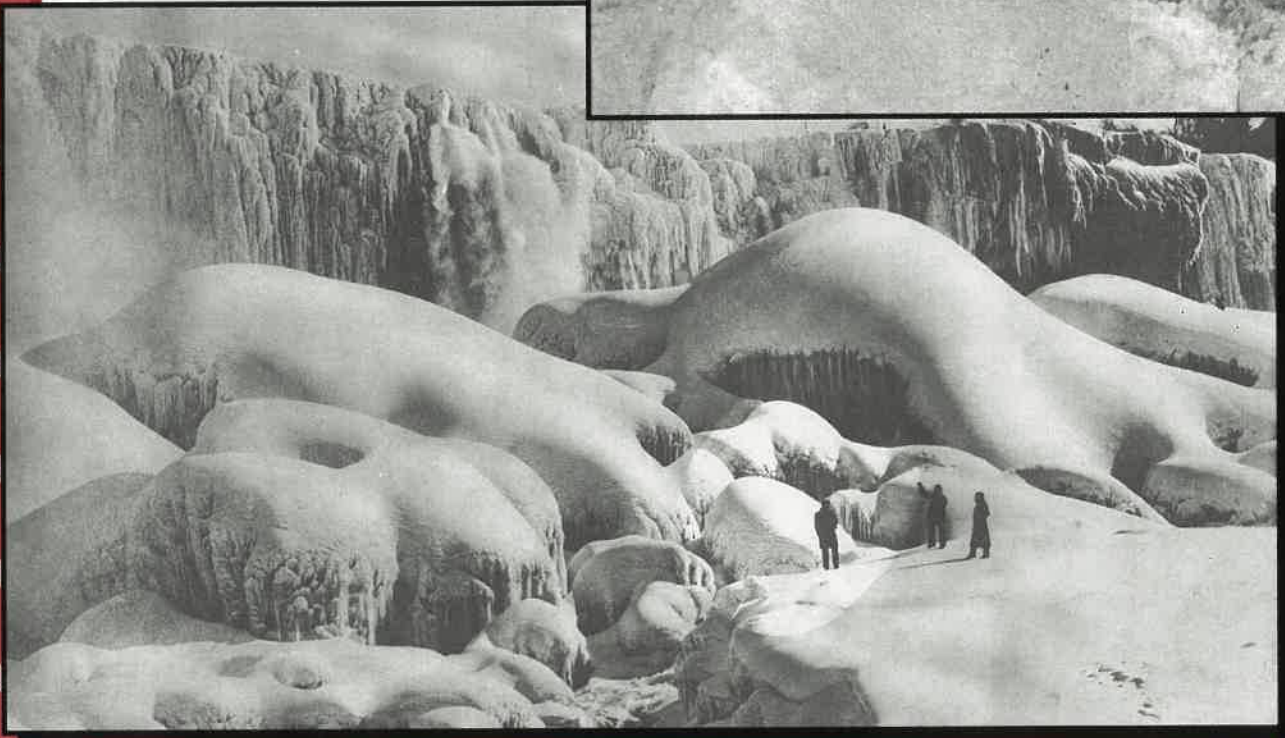
The frozen beacon lighthouse at Dunkirk provides a vivid sense of life along the Great Lakes, ca. 1924.

WESTERN NEW YORK HERITAGE  
PRESS COLLECTION

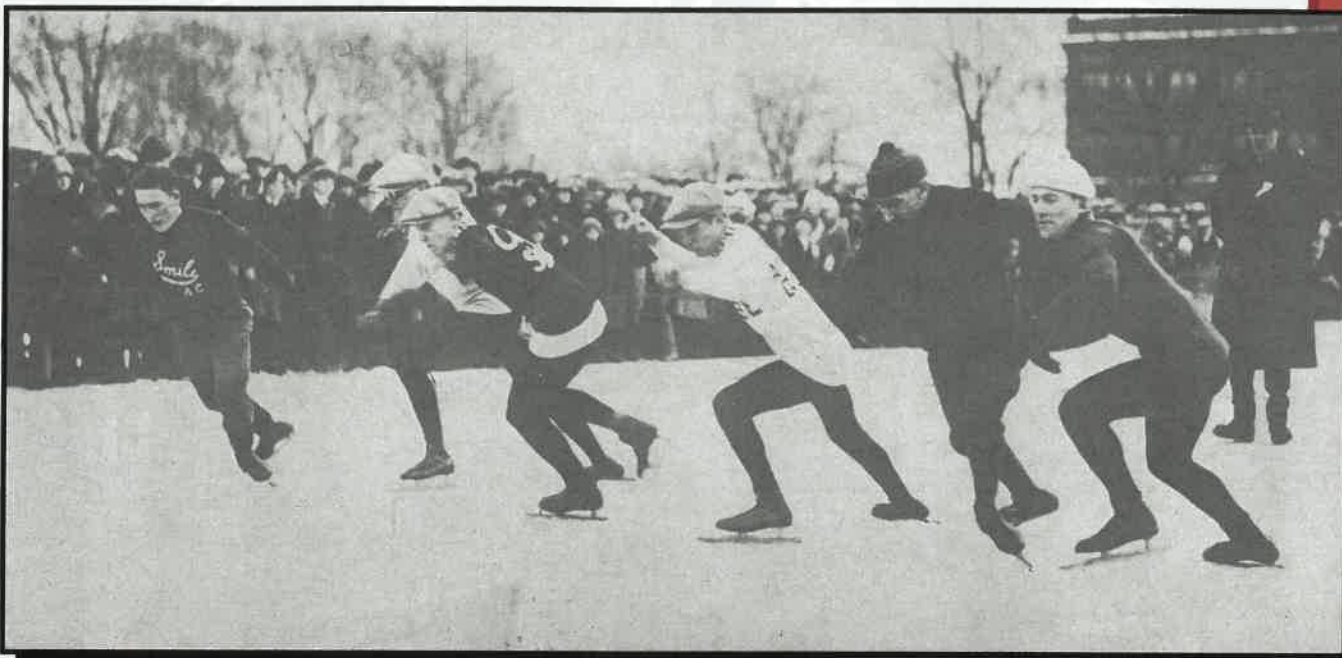
Ice jams like this one on the Lower Niagara River in the early 1920s occasionally made it possible for daring winter adventurers to make their way to and from the Canadian shore on foot.  
WESTERN NEW YORK HERITAGE PRESS COLLECTION



Two youngsters built this "snow bridge" in Niagara County, near Pekin, ca. 1923.  
WESTERN NEW YORK HERITAGE PRESS COLLECTION



Niagara Falls continues to provide breathtaking frozen sculptures during the cold winter months, though visitors are no longer allowed to get a close-up look like the folks in this ca. 1922 photo.  
WESTERN NEW YORK HERITAGE PRESS COLLECTION



Speed racers get set to compete in the 100-yard skating dash at the annual skating carnival at Humboldt Park. These carnivals were held at Delaware, Humboldt and Cazenovia Parks, under the direction of the City Bureau of Recreation.  
WESTERN NEW YORK HERITAGE PRESS COLLECTION

## *Frigid Fun - 1920s Style*



Skaters round a corner during one of the races held during Cazenovia Park's skating carnival, ca. 1923.  
WESTERN NEW YORK HERITAGE PRESS COLLECTION



Some young female skaters cheer on their favorite racers at the annual skating carnival held at Humboldt Park.

WESTERN NEW YORK HERITAGE PRESS COLLECTION



Young ladies line up for the camera while attending the skating carnival at Cazenovia Park.

WESTERN NEW YORK HERITAGE PRESS COLLECTION



Ruth and Paul Minthorne try their hands – or rather their feet – at skiing on a slope in Delaware Park.

WESTERN NEW YORK HERITAGE PRESS COLLECTION

Don't try this at home!! Some adventurous boys take a sled ride around Delaware Park – courtesy of a moving car.

WESTERN NEW YORK HERITAGE PRESS COLLECTION



Though it usually presents some challenges, a Western New York winter has always meant opportunities for family fun!

WESTERN NEW YORK HERITAGE PRESS COLLECTION