

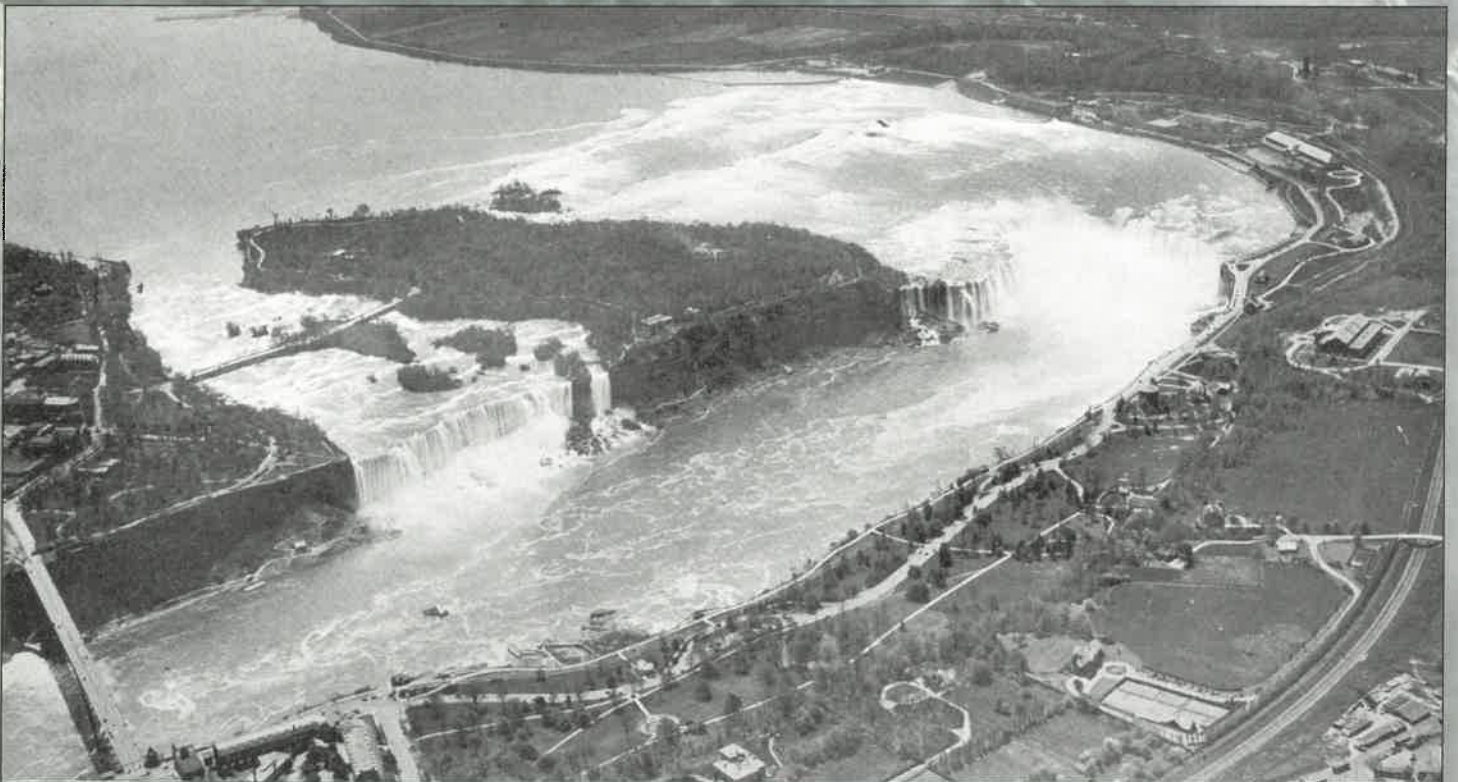
Old Photo Album: AERIAL PHOTOS OF THE NIAGARA FRONTIER

By J.H.C.

ALL PHOTOS FROM WASHBURN & RONNE'S "BUFFALO & NIAGARA FRONTIER FROM THE AIR" 1924, COURTESY OF WM. H. LOOS



Edwin Ronne, left, and Milton Washburn, aerial photographers, and their Curtiss Bi-plane.



Niagara Falls. Note the park-like setting on the Canadian side, in contrast to today's casino-driven commercialism.



The Erie Barge Canal winds between the cities of North Tonawanda, left, and Tonawanda, right. In the middle foreground, the old Erie Canal is being filled in. Ellicott Creek goes off to the right.

Over 140 years of Real Estate excellence!

WEST SENECA



ELMWOOD VILLAGE



DELAWARE DISTRICT



AMHERST



Gurney, Becker & Bourne has been listing and selling properties throughout Western New York for over 140 years, making us the oldest and most experienced firm in the area. Put our highly trained agents to work for you! Visit our website at www.gbbourne.com or call us at 849-1234.

GURNEY, BECKER & BOURNE

560 Delaware Ave., Ste. 200

Buffalo, NY 14202

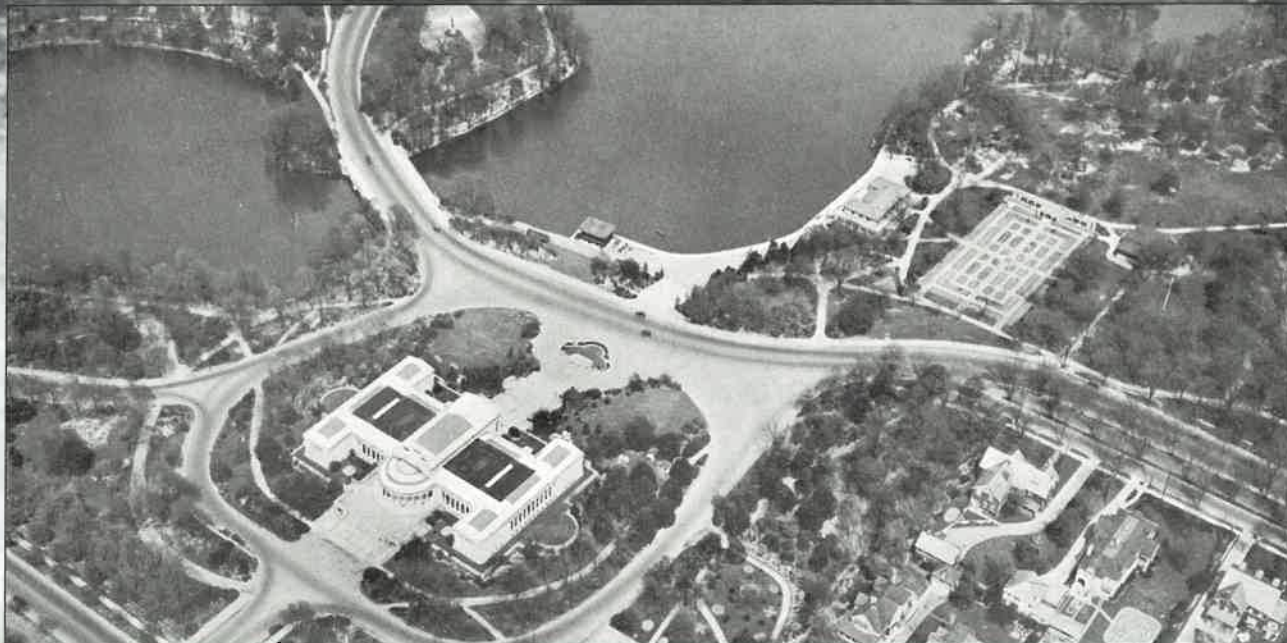
716-849-1234

gbb@gbbourne.com

www.gbbourne.com



**Gurney Becker
& Bourne**
Since 1864
REAL ESTATE & INSURANCE



The original, formal symmetrical Albright Art Gallery facing Lincoln Parkway and Delaware Park Lake. The rose garden is fully developed adjacent to the park casino.

Shopping Historic *Downtown* Lockport



THE ERIE CANAL DISCOVERY CENTER
Interpretive Center For Erie Canal Heritage
 24 Church Street, Lockport
 Open May - October • Daily 9-5

THE COL. Wm. BOND HOUSE

National Register Museum House
 Home of Jesse Hawley, whose writings convinced
 DeWitt Clinton to dig the Erie Canal.

Seasonal Hours

NIAGARA COUNTY

7-Building Historical Campus
 215-229 Niagara Street, Lockport
 Open Mon.-Sat. 9-5, year round
 For information on any location, call

716-434-7433

www.NiagaraHistory.org
 email: canaldiscovery@aol.com



Lockport Locks & Erie Canal Cruises

May—October
 Awarded AAA GEM
 Featured on
 History Channel's
 "Modern Marvels"
 210 Market St.
 Lockport, NY
 3 lights east of Rts 78 & 31

www.lockportlocks.com
 800-378-0352



SKIN REJUVENATION • BOTOX • DERMAL FILLERS
 LASER HAIR REDUCTION • MICRODERMABRASION
 ACNE TREATMENT • FACIAL THERAPIES • MASSAGE THERAPY

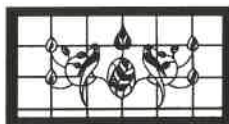
ULRICH CITY CENTRE, 80 MAIN STREET, SUITE J, LOCKPORT
 716.433.0086

OLDE MAIN STREET

2 EAST AVENUE • LOCKPORT, NY 14094
 (ADJ. TO THE HISTORIC PALACE THEATRE)

ANTIQUES • NOSTALGIA Bought & Sold

HOURS:
 Wed.
 thru Sat.
 Noon-5 p.m.
 Most
 Sundays
 1-5 p.m.



716-434-4495
 716-433-4961
 Terri Merritt

Would you drive 30 minutes
 for a symbol that says forever?

Mills
 JEWELERS
 51 Main St. Lockport, NY
www.millsjewelers.com





The serpentine Buffalo River creates a peninsula in the center of this view. At the right is the Concrete-Central grain elevator with three dark marine towers in the center of the elevation. At the left, the site of the Lake & Rail is vacant.



The Buffalo waterfront at the foot of Main Street. The buildings of the canal district, lower Main Street and the "Cobblestone District" are still in place. The Dakota Elevator stands near the end of the City Ship Canal. The south Michigan Street lift bridge is visible in the foreground.



The Joseph Ellicott Radial Plan. The Statler Hotel and Buffalo Athletic Club building flank Niagara Square. The site of City Hall and the site of the new



Federal Court House are filled with old buildings.